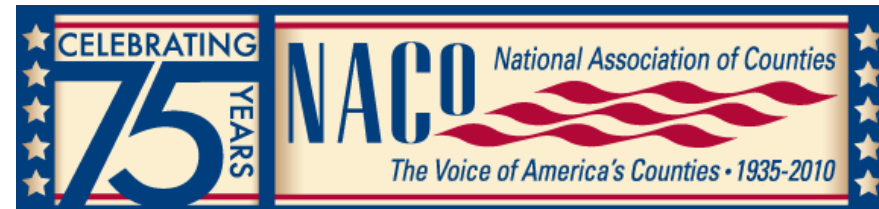


The National Association of Counties and the Digital Coast

DIGITAL COAST



Counties and the Digital Coast

- **High variability in authorities and capacity among all 3,068 counties.**
- **Many counties have land use authority in zoning, development, water and transportation infrastructure.**
- **Increasing stress to maintain water quality and availability, provide recreation areas and grow local economies.**
- **County governments are developing their capacity to undertake or partner in restoration efforts to address these issues.**

Counties and the Digital Coast

- **Counties utilize GIS data for strategic restoration and flood mitigation to improve the management of:**
 - **Stormwater treatment**
 - **Green infrastructure**
 - **Emergency management**
- **The Digital Coast offers free access to county-level data (where available) and many tools now offer county officials and non-GIS specialist staff the ability to utilize GIS data without needing special expertise or software.**

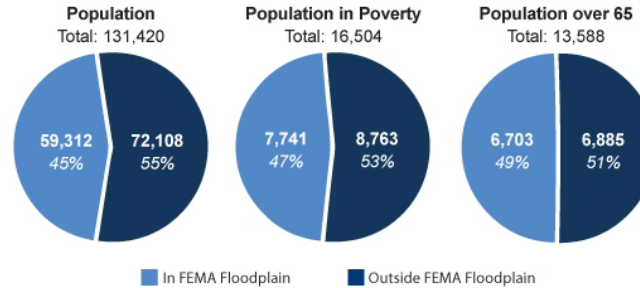
Counties and the Digital Coast

- **County Snapshots helps identify the loss of agricultural and natural land to development.**
 - **Counties can identify areas for farmland preservation, conservation easements and target strategic restoration areas.**
 - **New snapshots in 2011 will include a county wetlands snapshot, so that local decision makers can easily identify strategic conservation areas for wetlands.**

Hazard Exposure Information for Jackson County, Mississippi

People + Floodplains = Not Good
High-Risk Populations + Floodplains = Even Worse

The more homes and people located in a floodplain, the greater the potential for harm from flooding. Impacts are likely to be even greater when additional risk factors (age, income, capabilities) are involved, since people at greatest flood risk may have difficulty evacuating or taking action to reduce potential damage.

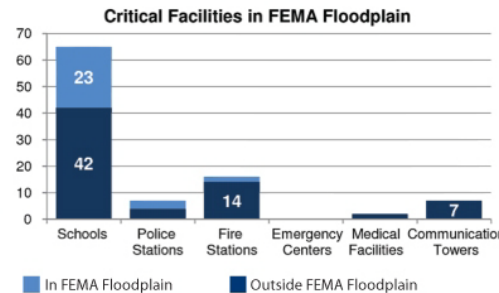


Based on 2000 U.S. Census records.

Community Infrastructure + Floodplains = Bad News

28% of critical facilities and 24% of road miles (512 miles) in Jackson County are within the floodplain.

Hospitals. Roads. Schools. Shelters. These facilities play a central role in disaster response and recovery. Understanding which facilities are exposed, and the degree of that exposure, can help reduce or eliminate service interruptions and costly redevelopment. Incorporating this information into development planning helps communities get back on their feet faster.

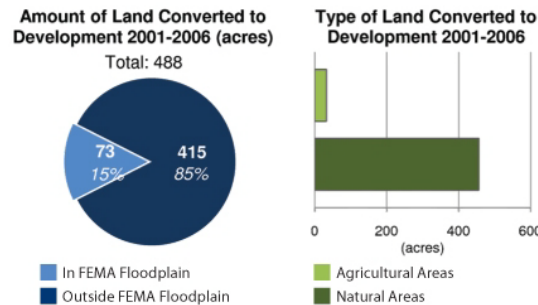


Based on Critical Facilities from FEMA HAZUS database.

Increasing Development in Floodplains = More People in Harm's Way

Loss of Natural Buffers = Less Protection

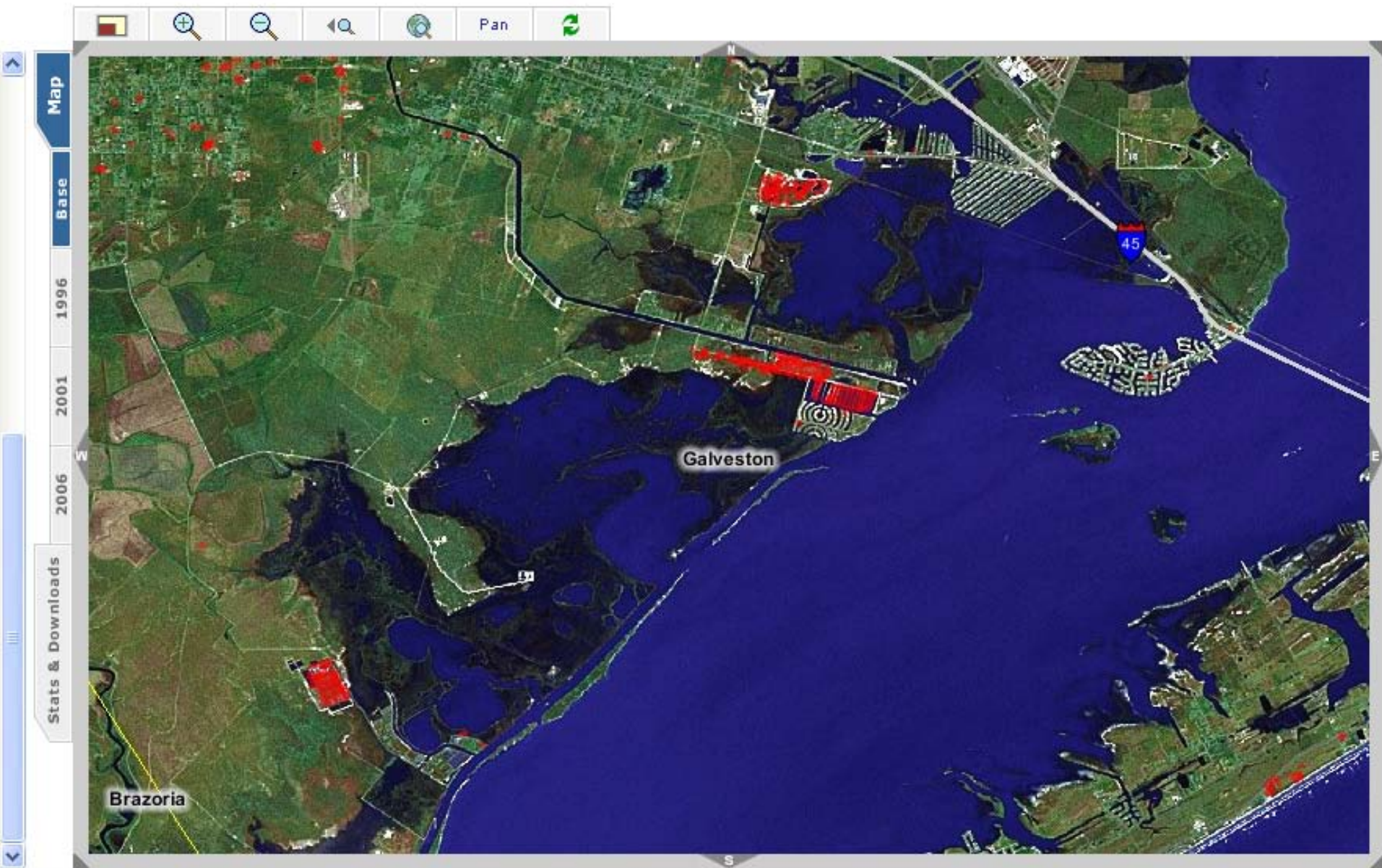
A county with more natural areas (wetlands, forests, etc.) and less development within floodplains typically has lower exposure to flooding. A county that monitors land cover changes within the floodplain will detect important trends that indicate whether flood exposure is increasing or decreasing. Armed with this information, local leaders can take steps to improve their safety and resilience.



Based on NOAA land cover data.

Counties and the Digital Coast

- **The Land Cover Atlas also illustrates to local planners, county staff and elected officials the changes in their county's land composition over the past 14 years.**
- **With this information, watershed groups and other prospective restoration partners can better tie restoration objectives with county concerns over clean water, aging gray infrastructure and public health.**



Building Resilient Coastal Communities: Counties and the Digital Coast



DIGITAL COAST



www.naco.org/coast

**For more information or to request a printed copy of
NACo's Issue Brief on the Digital Coast, contact**

Carrie Clingan

cclingan@naco.org

202.942.4246

www.naco.org/coast

DIGITAL COAST

