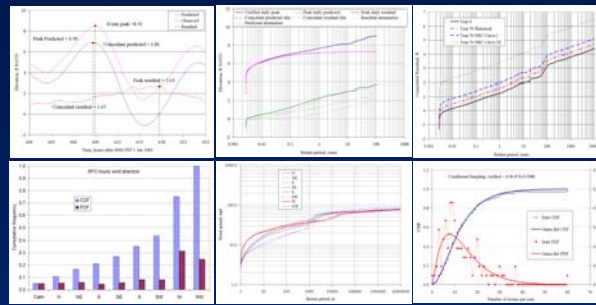
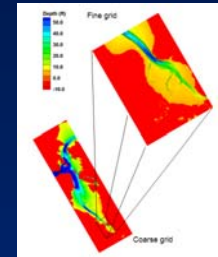


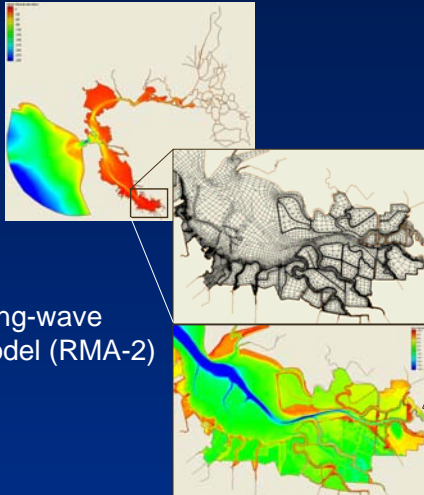
Uncertainty Analysis for Flood Levels South San Francisco Bay Shoreline Study



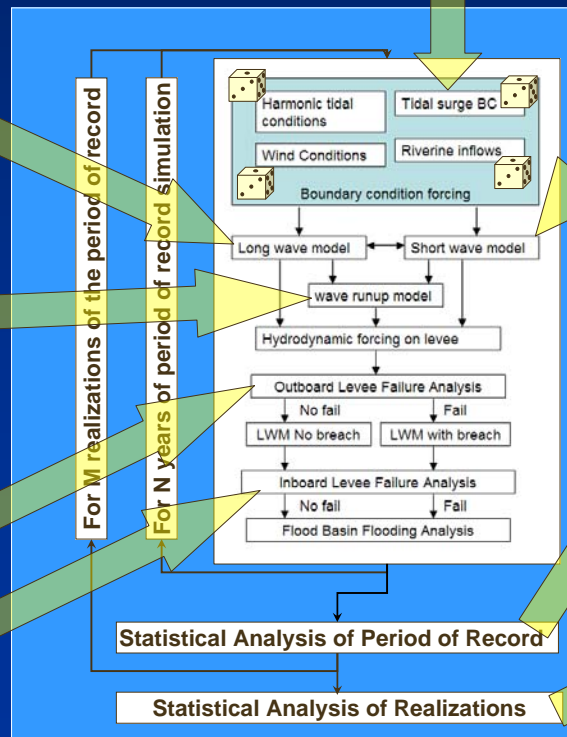
Statistical distributions of Boundary Conditions



Short-wave Model (ST-WAVE)



Long-wave Model (RMA-2)



Monte Carlo Uncertainty Model

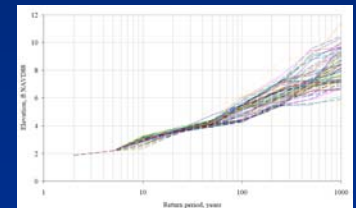
For more information contact:

Dr. Joseph V. Letter, Jr., 772-342-1295,

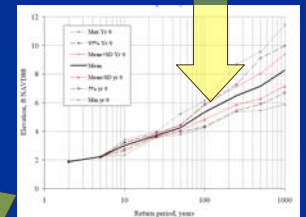
email: Joseph.V.Letter@usace.army.mil

or Dr. Robert T. McAdory, 601-634-3057

email: Robert.T.McAdory@usace.army.mil

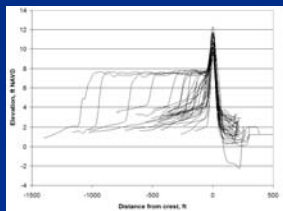


Statistics for each POR

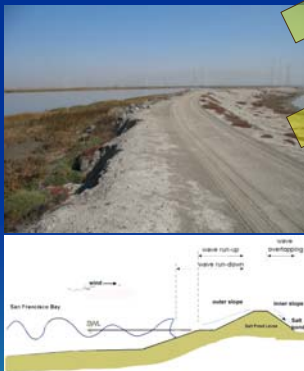


Statistics of all POR

Mapping Year 50 with historical sea level rise: 500-yr flood event



Levee runup and overtopping model (BOUS-1D)



Levee dynamic erosion analysis



Coastal And Hydraulics Laboratory
Engineer Research & Development Center



South San Francisco Bay
Shoreline Study

Alviso Ponds & Santa Clara County Interim Feasibility Study

Other Participating Agencies: US Fish & Wildlife Service; California Department of Fish & Game; Alameda County Flood Control District