

LOUISIANA COASTAL AREA (LCA) PROGRAM

Presented by:

Jammie Favorite, OCPR

November 16, 2010



BUILDING STRONG®



History and Milestones

- **November 2004**: LCA Ecosystem Restoration Report (“Near-term Plan”)
- **January 2005**: Chief’s Report signed – Recommends program authorization
- **November 2007**: Water Resources Development Act authorized LCA Program



Louisiana Coastal Area (LCA), Louisiana

Ecosystem Restoration Study



November 2004
Final
Volume 1:
LCA Study - Main Report



BUILDING STRONG®



LCA Program Goal

Reverse the current trend of degradation of the coastal Louisiana ecosystem by maximizing restoration strategies that

- reintroduce historic flows of water, nutrients, and sediment to coastal wetlands, and
- Maintain the structural integrity of the coastal ecosystem



BUILDING STRONG®



LCA Components

- Five Initial Projects (Construction Reports)
- Ten Additional Projects (Feasibility Studies)
- Beneficial Use of Dredged Material Program
- Science and Technology (S&T) Program
- Demonstration Project Program
- Investigations into Modifications of Existing Structures
- Large-Scale and Long-term Studies

TOTAL PROGRAM COST: approx \$2.0 billion



BUILDING STRONG®

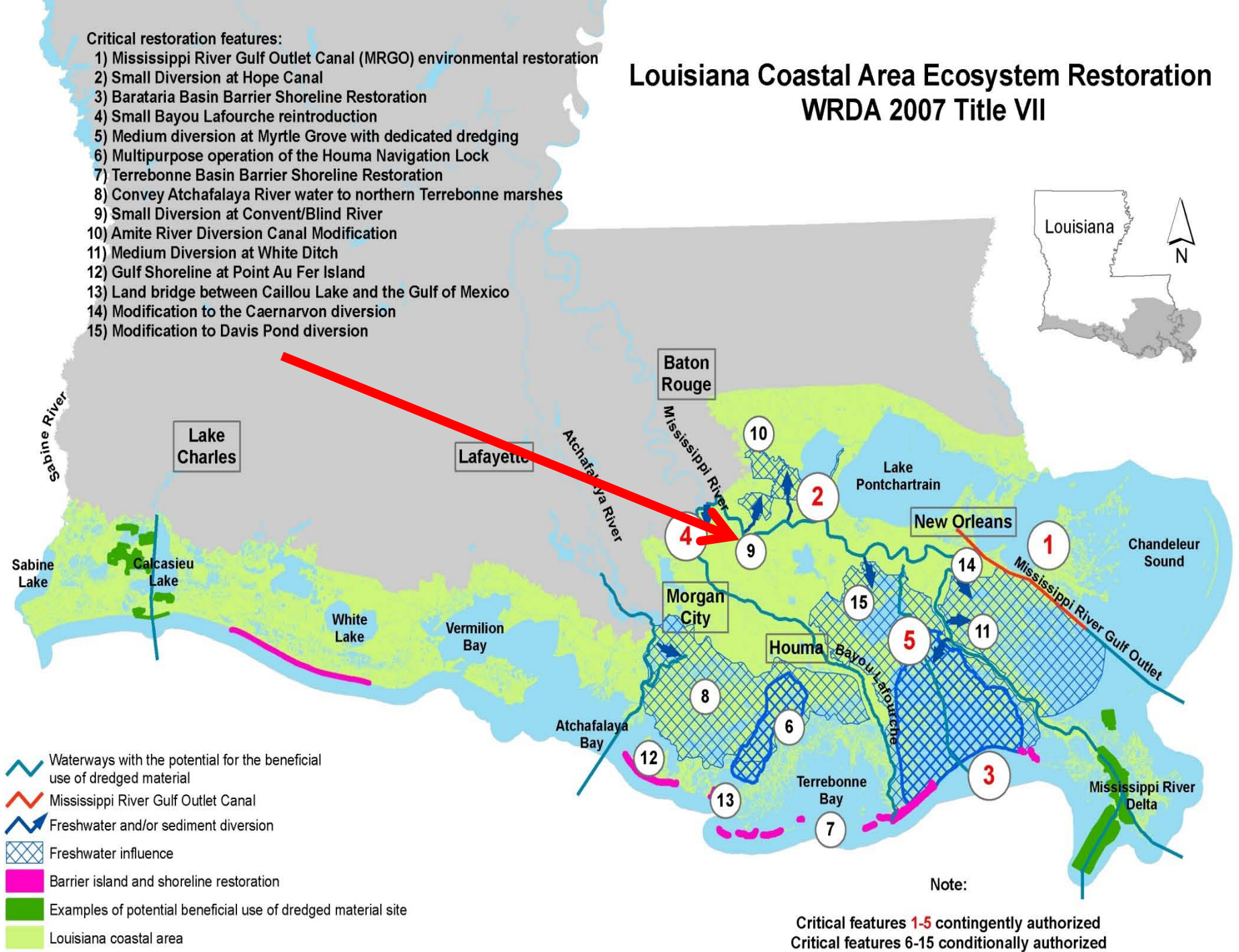


Louisiana Coastal Area Ecosystem Restoration WRDA 2007 Title VII



Critical restoration features:

- 1) Mississippi River Gulf Outlet Canal (MRGO) environmental restoration
- 2) Small Diversion at Hope Canal
- 3) Barataria Basin Barrier Shoreline Restoration
- 4) Small Bayou Lafourche reintroduction
- 5) Medium diversion at Myrtle Grove with dedicated dredging
- 6) Multipurpose operation of the Houma Navigation Lock
- 7) Terrebonne Basin Barrier Shoreline Restoration
- 8) Convey Atchafalaya River water to northern Terrebonne marshes
- 9) Small Diversion at Convent/Blind River
- 10) Amite River Diversion Canal Modification
- 11) Medium Diversion at White Ditch
- 12) Gulf Shoreline at Point Au Fer Island
- 13) Land bridge between Caillou Lake and the Gulf of Mexico
- 14) Modification to the Caernarvon diversion
- 15) Modification to Davis Pond diversion



- Waterways with the potential for the beneficial use of dredged material
- Mississippi River Gulf Outlet Canal
- Freshwater and/or sediment diversion
- Freshwater influence
- Barrier island and shoreline restoration
- Examples of potential beneficial use of dredged material site
- Louisiana coastal area

Note:

Critical features 1-5 contingently authorized
Critical features 6-15 conditionally authorized

LCA Additional “Six” Projects

CONSTRUCTION – The Secretary may carry out these projects if a favorable report of the Chief is completed by no later than December 31, 2010.

- ▶ Multipurpose Operation of Houma Navigation Lock
- ▶ Terrebonne Basin Barrier Shoreline Restoration
- ▶ Small Diversion at Convent/Blind River
- ▶ Amite River Diversion Canal Modification
- ▶ Medium Diversion at White Ditch
- ▶ Convey Atchafalaya River Water to Northern Terrebonne Marshes


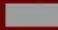


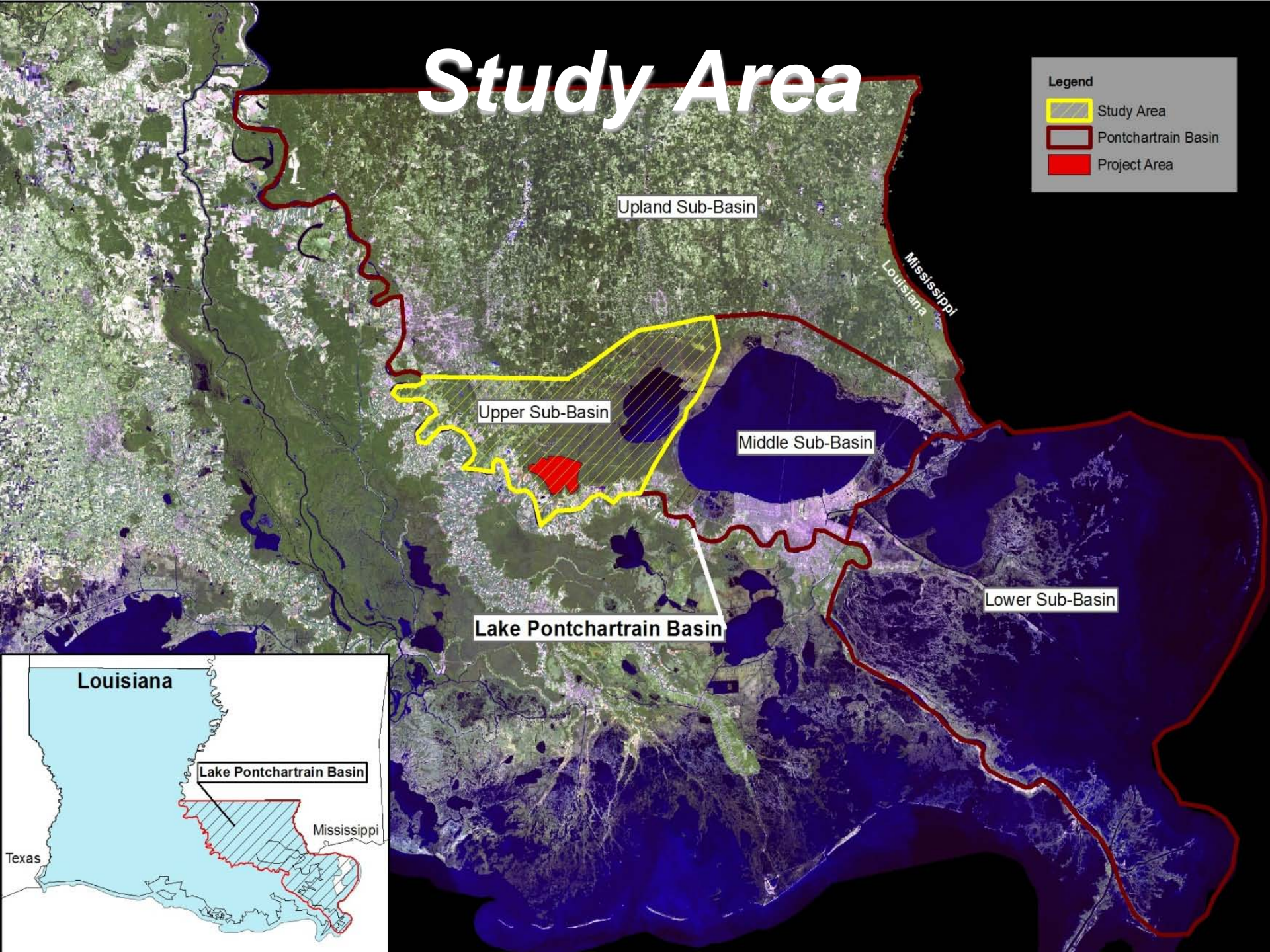
BUILDING STRONG®



Study Area

Legend

-  Study Area
-  Pontchartrain Basin
-  Project Area



Upland Sub-Basin

Mississippi
Louisiana

Upper Sub-Basin

Middle Sub-Basin

Lower Sub-Basin

Lake Pontchartrain Basin

Louisiana

Lake Pontchartrain Basin

Mississippi

Texas

LCA Additional “Four” Projects

CONSTRUCTION - The Secretary is authorized to carry out the following projects referred to in the restoration plan if the Secretary determines such projects are feasible.

- ▶ Maintain Land Bridge Between Caillou Lake and Gulf of Mexico
- ▶ Stabilize Gulf Shoreline at Point Au Fer Island
- ▶ Modification of Caernarvon Diversion
- ▶ Modification of Davis Pond Diversion



BUILDING STRONG®



LCA Critical Needs

- Prevent future land loss where predicted to occur
- Restore fundamentally impaired or mimic deltaic processes through river reintroduction
- Restore or preserve endangered critical geomorphic structures
- Protect vital local, regional, and national socio-economic resources



BUILDING STRONG®



Partner Agencies



USACE: Department of Army - U.S. Army Corps of Engineers

NRCS: Department of Agriculture - Natural Resources Conservation Service

NMFS: Department of Commerce - National Marine Fisheries Service

USFWS: Department of the Interior - U.S. Fish and Wildlife Service

USEPA: Environmental Protection Agency



State of Louisiana

Office of the Governor

Office of Coastal Protection & Restoration

LA Department of Natural Resources

LA Department of Environmental Quality

LA Department of Wildlife & Fisheries



Contact Information

LCA Web site: www.lca.gov

Jammie Favorite, OCPR

225-342-4119

Jammie.Favorite@la.gov



BUILDING STRONG®

