

*Protecting & Restoring
Local Waters and
the Chesapeake Bay*



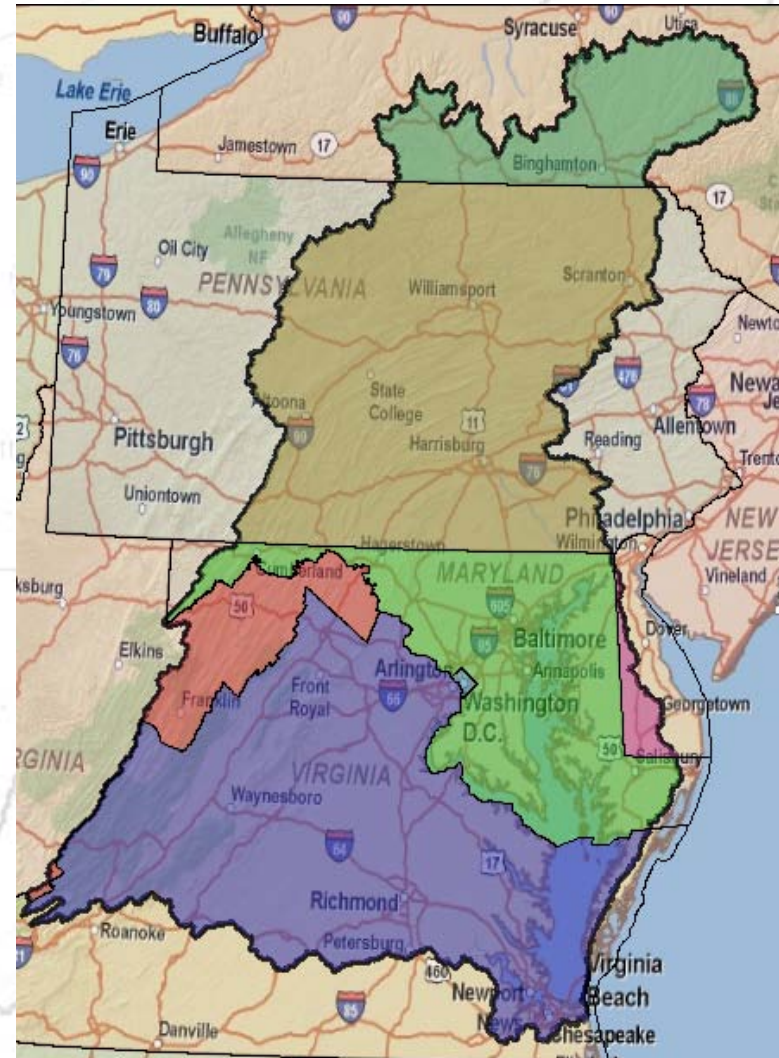
**Restore America's Estuaries
National Conference**

Gregory Barranco
Chesapeake Bay Program Office

November 2010

The Chesapeake Bay and Watershed

- Largest estuary in North America and the third largest in the world.
- Land-to-water ratio is 14:1; largest of any coastal water body in the world. Average depth of 21 feet.
- Supports more than 3,600 species of plants, fish and animals
- Home to almost 17 million people. About 150,000 new people move into the watershed each year.
- Tens of thousands of streams, creeks, and rivers are resources for communities throughout the watershed.
- 77,000 principally family farms.



Executive Order 13508



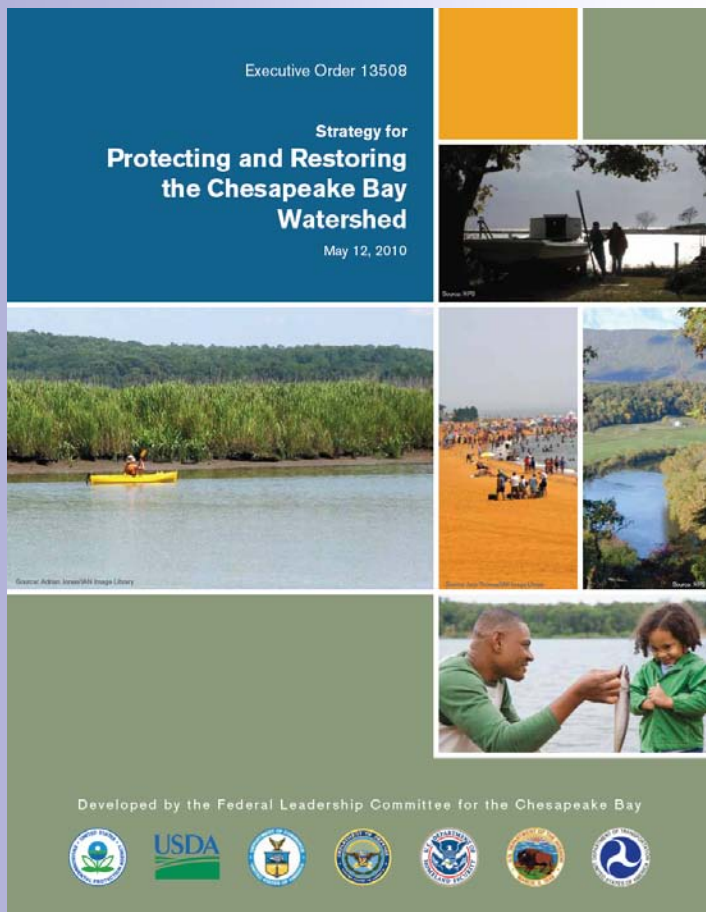
May 12, 2009 – President Obama issues EO 13508 for the Protection and Restoration of the Chesapeake Bay

- ❑ **Federal Leadership Committee**
- ❑ **EO Strategy**
- ❑ **Annual Action Plan and Progress Report**



EO 13508 Chesapeake Bay Strategy

May 12, 2010



Proposed FUNDING: \$490.5M



EO FY2011 Action Plan

Fiscal Year 2011 Action Plan

Executive Order 13508

*Strategy for Protecting and Restoring the
Chesapeake Bay Watershed*



Federal Leadership Committee for the Chesapeake Bay
September 30, 2010

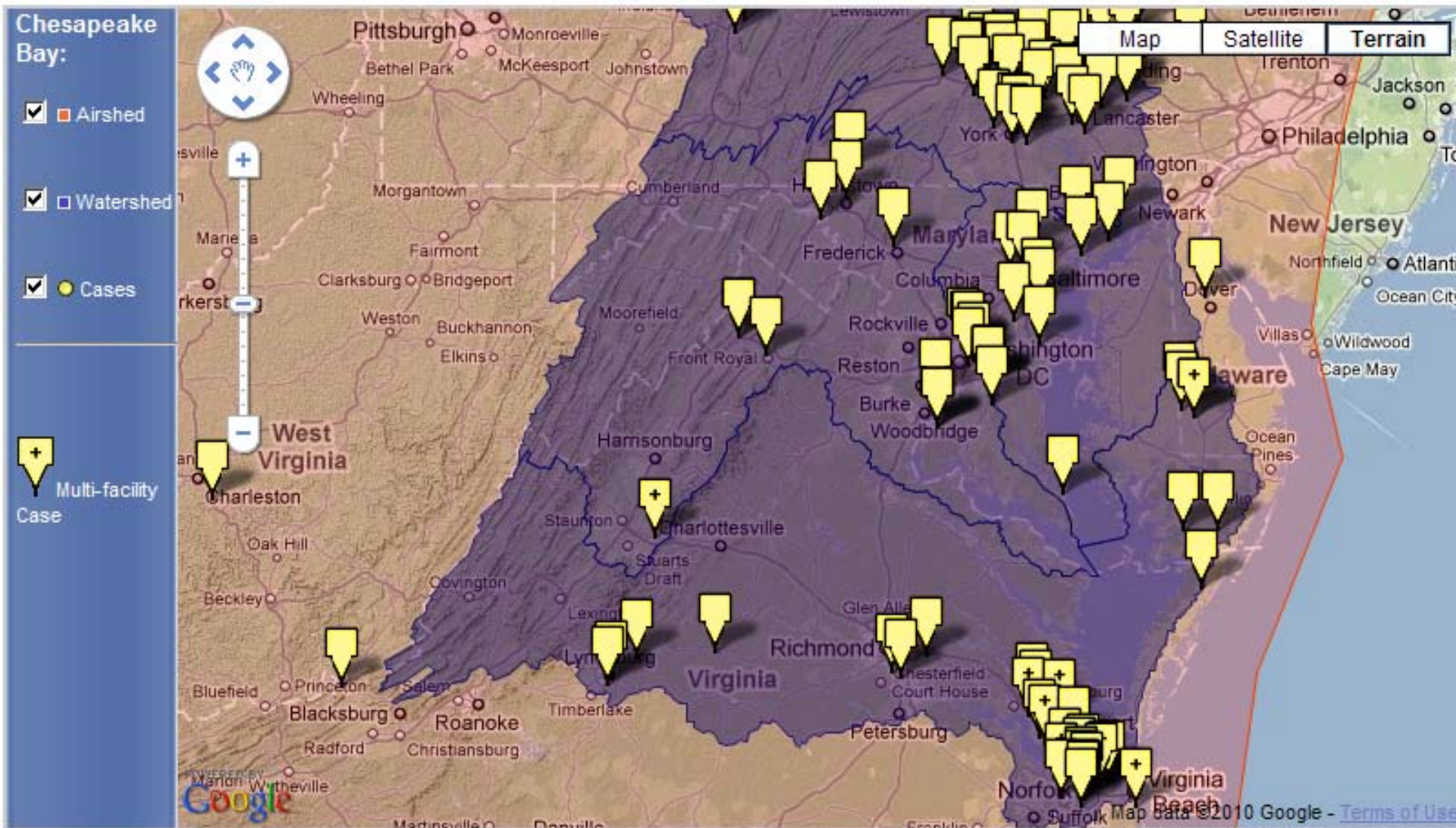


September 30, 2010

Federal agencies
release

*Fiscal Year 2011
Action Plan*

Goal: RESTORE WATER QUALITY



Goal:

RESTORE WATER QUALITY

AGRICULTURAL CONSERVATION OUTCOME:

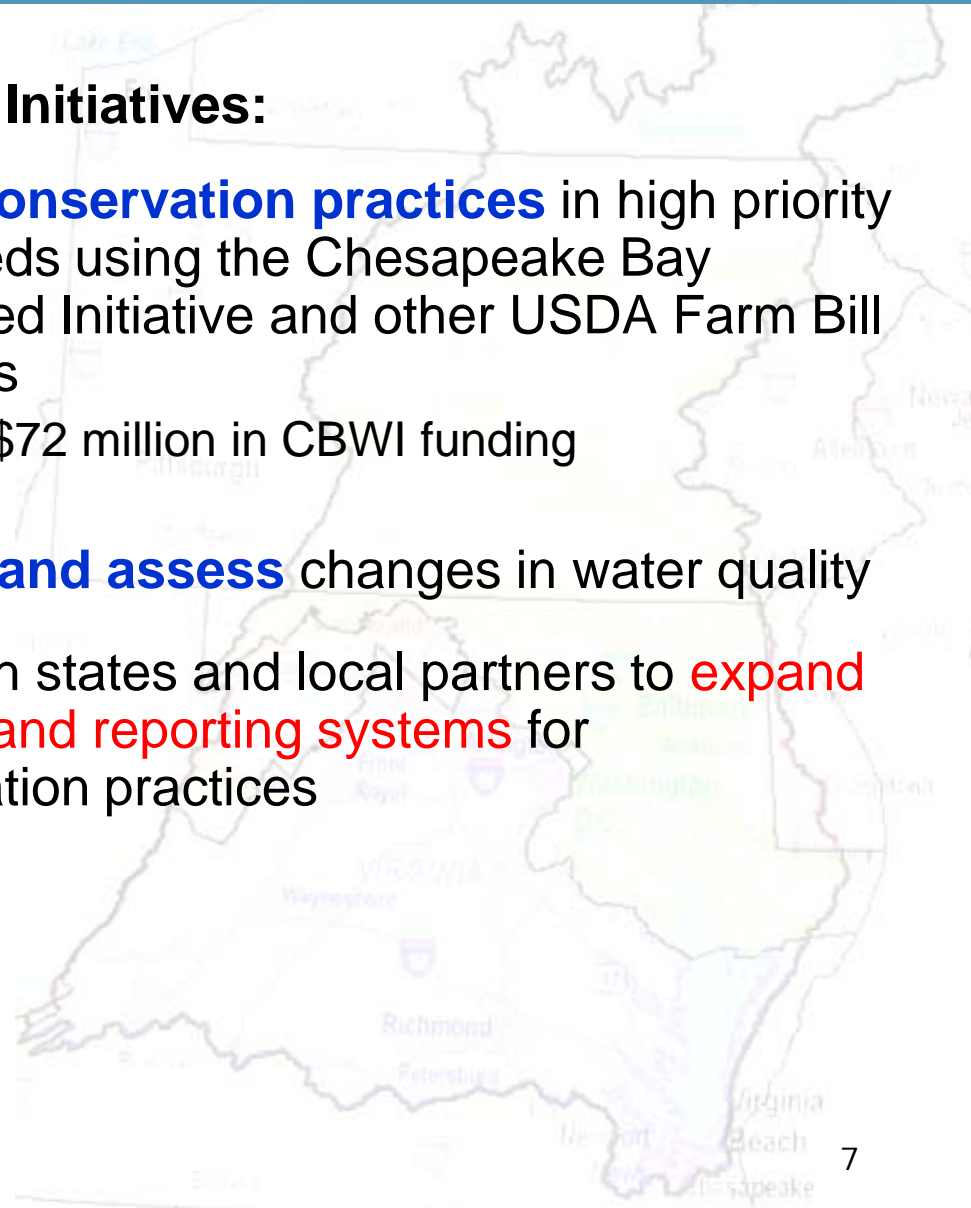
Work with producers to apply new conservation practices on 4 million acres of agricultural working lands in high-priority watersheds by 2025 to improve water quality in the Chesapeake Bay and its tributaries.

FY2011 Funding \$134.7 M



Major 2011 Initiatives:

- **Target conservation practices** in high priority watersheds using the Chesapeake Bay Watershed Initiative and other USDA Farm Bill Programs
 - Over \$72 million in CBWI funding
- **Monitor and assess** changes in water quality
- Work with states and local partners to **expand tracking and reporting systems** for conservation practices



Goal: RECOVER HABITAT

WETLAND RESTORATION

OUTCOME: Restore 30,000 acres of tidal and non-tidal wetlands and enhance the function of an additional 150,000 acres of degraded wetlands by 2025.

FY2011 Funding \$10,051,789



Major 2011 Initiatives:

- **Restore and enhance priority Chesapeake tidal and non-tidal wetlands and living shorelines**
 - Restore/protect 300 acres of priority marshes and 1,200 acres on private land in FY2011
- **Combat invasive species that threaten habitat**
- **Evaluate the use of coastal and marine spatial planning (CMSP) in the Bay**
 - Define stakeholder needs related to CMSP in the Bay
 - Establish wetland **geospatial specialist and technician positions**

Goal:

SUSTAIN FISH & WILDLIFE

OYSTER OUTCOME: Restore native oyster habitat and populations in 20 tributaries out of 35 to 40 candidate tributaries by 2025.

FY2011 Funding \$3,570,519

BLUE CRAB OUTCOME: Maintain sustainable blue crab interim rebuilding target of 200 million adults (1+ years old) in 2011 and develop a new population target for 2012 through 2025.

FY2011 Funding \$37,500

BLACK DUCK OUTCOME: Restore a three-year average wintering black duck population in the Chesapeake Bay watershed of 100,000 birds by 2025.

FY2011 Funding \$384,427



Major 2011 Initiatives:

- **NOAA and USACE to coordinate with MD, VA, to develop a bay-wide strategy and finalize the Native Oyster Restoration Master Plan**
 - Work with the states move to larger scale oyster restoration in Chesapeake Bay.
- **Continue coordination with states and partners to sustain Bay blue crab population**
 - Identify critical factors affecting abundance and revise current blue crab abundance target

Goal:

CONSERVE LAND & INCREASE PUBLIC ACCESS

LAND CONSERVATION

OUTCOME: Protect an additional 2 million acres of lands throughout the watershed currently identified as high conservation priorities at the federal, state or local level by 2025, including 695,000 acres of forest land of highest value for maintaining water quality.

FY2011 Funding \$41,347,793

PUBLIC ACCESS OUTCOME:

Increase public access to the Bay and its tributaries by adding 300 new public access sites by 2025.

FY2011 Funding \$1,246,425



Major 2011 Initiatives:

- **Invest in land protection at parks, refuges, around military bases and through LWCF and WRP/FRPP grants**
 - \$30 million dollars for direct land protection.
- **USGS will develop a watershed-wide, publicly accessible GIS-based land conservation targeting system to support sound land conservation planning, and strategic coordination.**
 - USGS and NPS will convene working sessions to develop scope and mechanisms for the system
 - Will build on existing data; gaps filled through landscape surveys
- **Develop watershed-wide public access plan to guide access expansion and invest in new access sites through matching grants**
 - FY 2011 Budget would double funding for Gateways program

Supporting Strategy:

RESPOND TO CLIMATE CHANGE

CLIMATE CHANGE

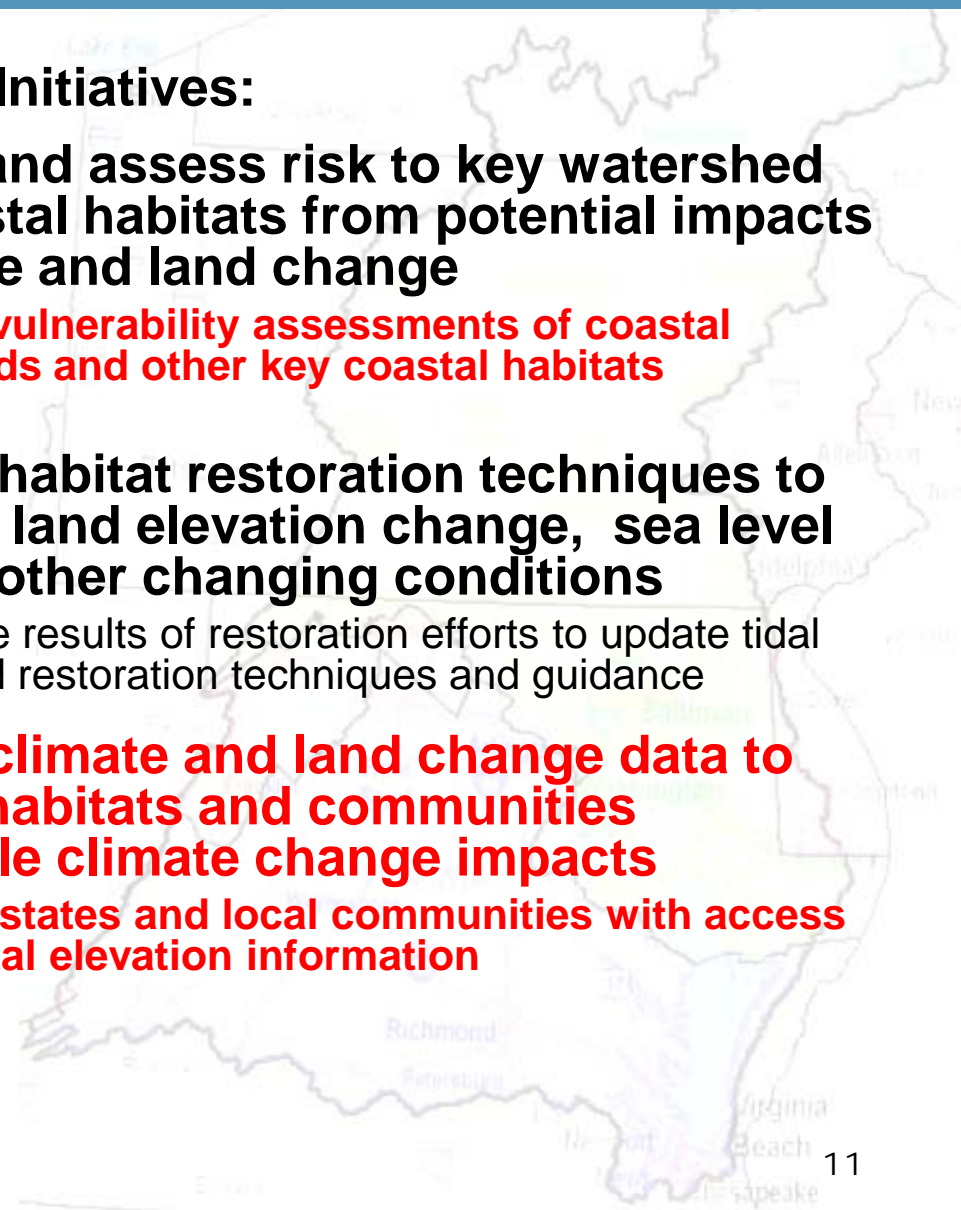
OBJECTIVE: Minimize the vulnerability of the Chesapeake Bay watershed, including its habitats, public infrastructure and human communities, to adverse impacts from climate change.

FY2011 Funding \$4,104,561



Major 2011 Initiatives:

- **Identify and assess risk to key watershed and coastal habitats from potential impacts of climate and land change**
 - **Begin vulnerability assessments of coastal wetlands and other key coastal habitats**
- **Improve habitat restoration techniques to consider land elevation change, sea level rise and other changing conditions**
 - Analyze results of restoration efforts to update tidal wetland restoration techniques and guidance
- **Provide climate and land change data to identify habitats and communities vulnerable climate change impacts**
 - **Assist states and local communities with access to digital elevation information**



Supporting Strategy: **STRENGTHEN SCIENCE**

STRENGTHENING SCIENCE

OBJECTIVE: Strengthen science to support ecosystem-based adaptive management, to more effectively prioritize, implement, monitor and evaluate the actions and policies needed, and to identify new threats to the health of the Chesapeake Bay and its watershed.

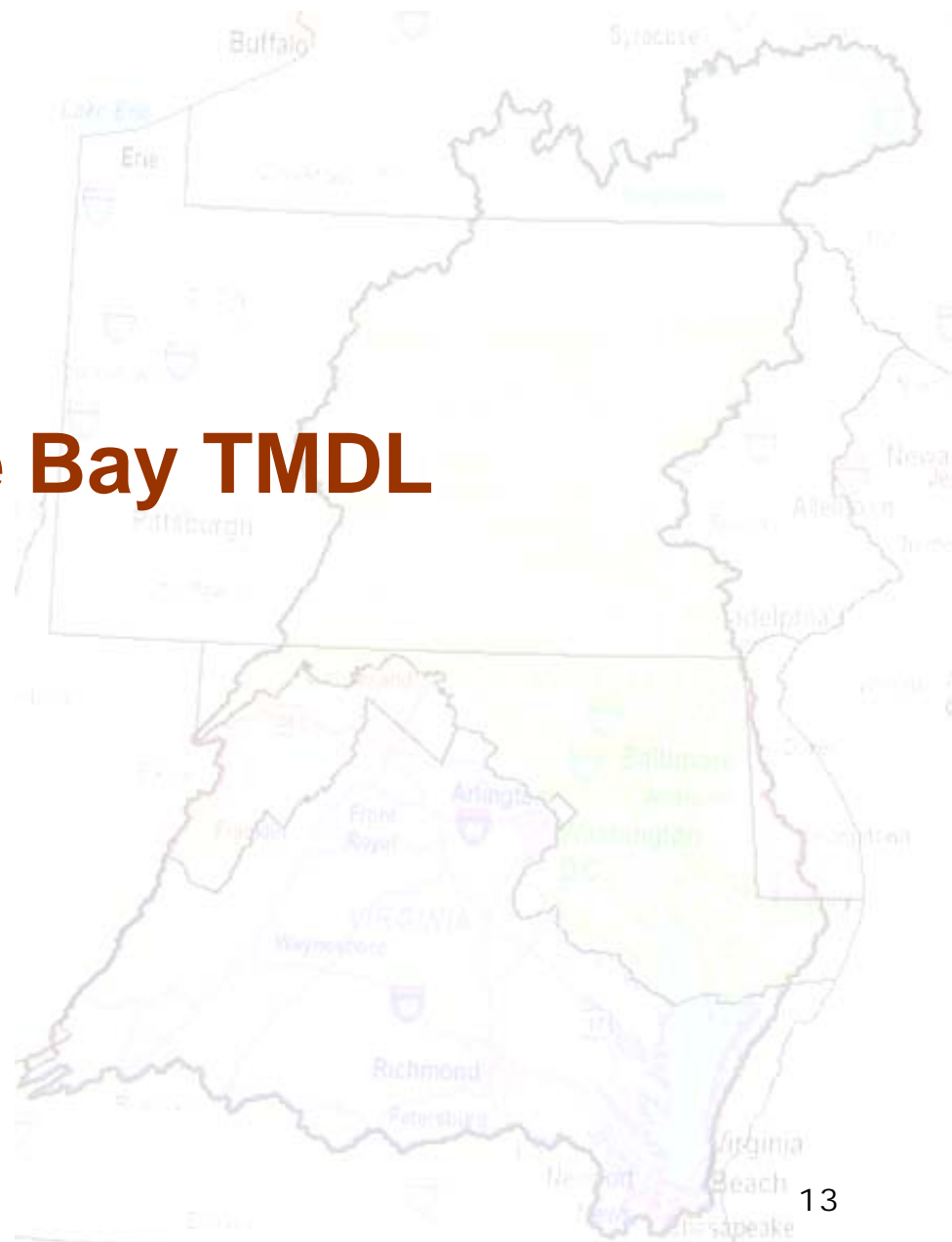
FY2011 Funding \$13,077,205



Major 2011 actions:

- Implement ecosystem-based adaptive management
- Transform the CBP science activities by increasing capacity from EO federal science actions
- **Improve tools to target:**
 - **Water-quality actions (CBP models, SPARROW models, GW models)**
 - **Land conservation targeting system**
- Enhance monitoring by establishing a Monitoring Alliance
 - CBP watershed water-quality network
 - **Tidal monitoring and Chesapeake Bay Interpretive Buoy System**

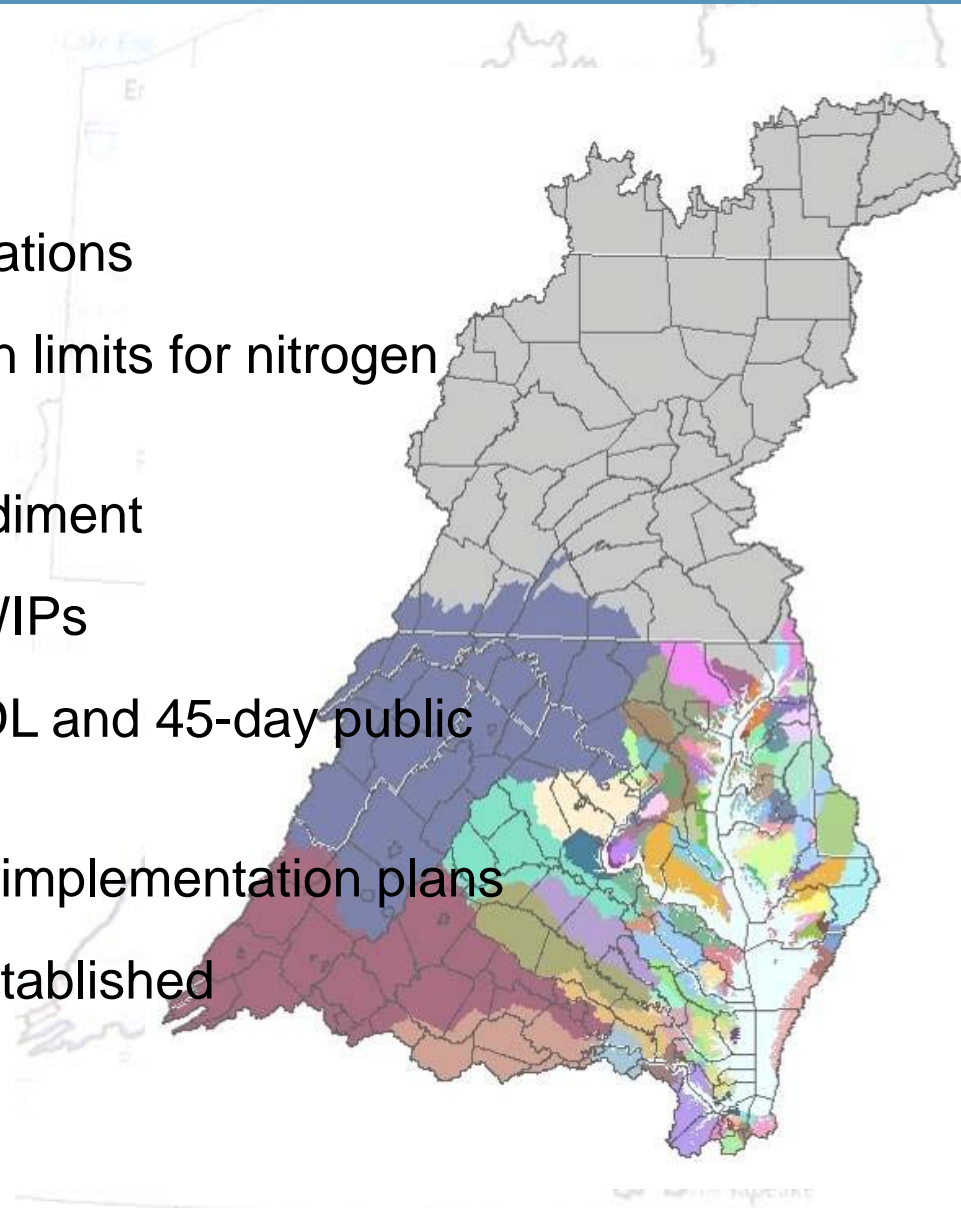
Chesapeake Bay TMDL



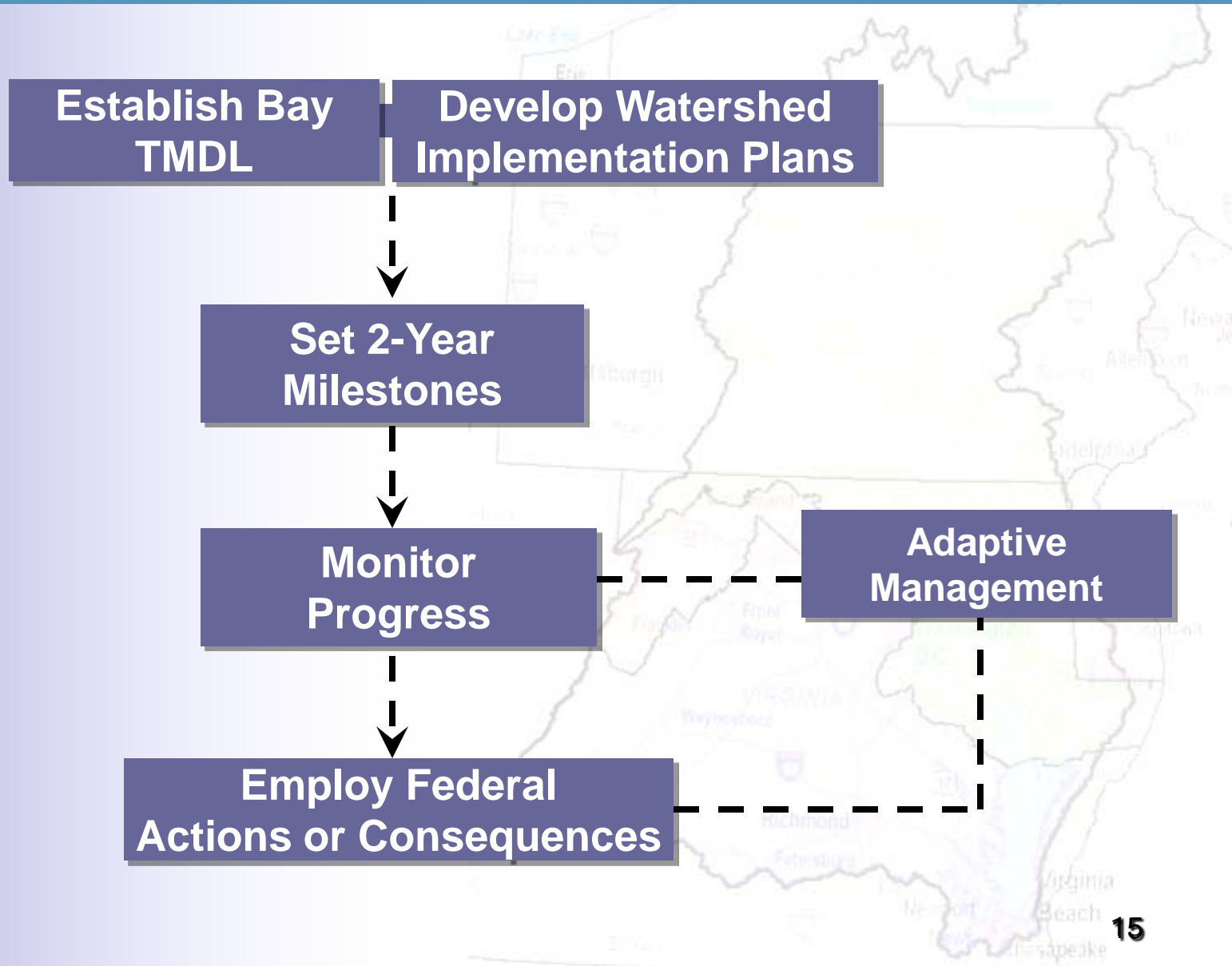
Chesapeake Bay TMDL Updates

Basic Approach

- **November 2009**, EPA expectations
- **July 1**, allocations for pollution limits for nitrogen and phosphorus
- **August 15**, allocations for sediment
- **September 1**, Phase I draft WIPs
- **Sept. 24 to Nov. 8**, Draft TMDL and 45-day public comment period
- **November 29**, Final Phase 1 implementation plans
- **December 31**, Final TMDL established



Accountability for Results



Bay TAS

Chesapeake Bay Tracking and Accounting System

- System to analyze/track TMDL progress
 - Data on TMDL, WLA, milestones, progress (at the level the data is available)
 - Display in tables, graphs, charts
 - Chesapeake Stat will *likely* use BayTAS and other data to present Bay TMDL Progress but the systems are different.
 - Other systems might draw data from BayTAS
- Access
 - States, EPA, CBPO; possibly local governments
 - Public will be able to see data
- Spatial Scale:
 - Basin-wide nutrient and sediment target loads
 - Segment-wide loads – possibly (States would need to report data to EPA)

ChesapeakeBay.net



ChesapeakeStat

“People, Process, and Information”

- A **systematic process** within the Partnership of **analyzing information and data** to continually assess progress towards goals and adapt strategies and tactics when needed.
- A **public website** that promotes improved accountability, fosters coordination and promotes transparency by sharing performance information on goals, indicators, strategies and funding.
- Existing information is used and displayed in ways that **better support decision-making**.

The screenshot shows the ChesapeakeStat website in a Windows Internet Explorer browser. The browser address bar displays the URL <http://stat.chesapeakebay.net/>. The website header includes navigation links for Home, ChesapeakeStat, and Windows Internet Explorer provided by EPA. The main content area features a map of the Chesapeake Bay region, a "Welcome to ChesapeakeStat!" message, and a "Bay Program Partnership" section with a list of programs. An "Upcoming Events" section lists events for July 17, July 28, and August 14. A video player is visible at the bottom left of the main content area.

<http://stat.chesapeakebay.net/>